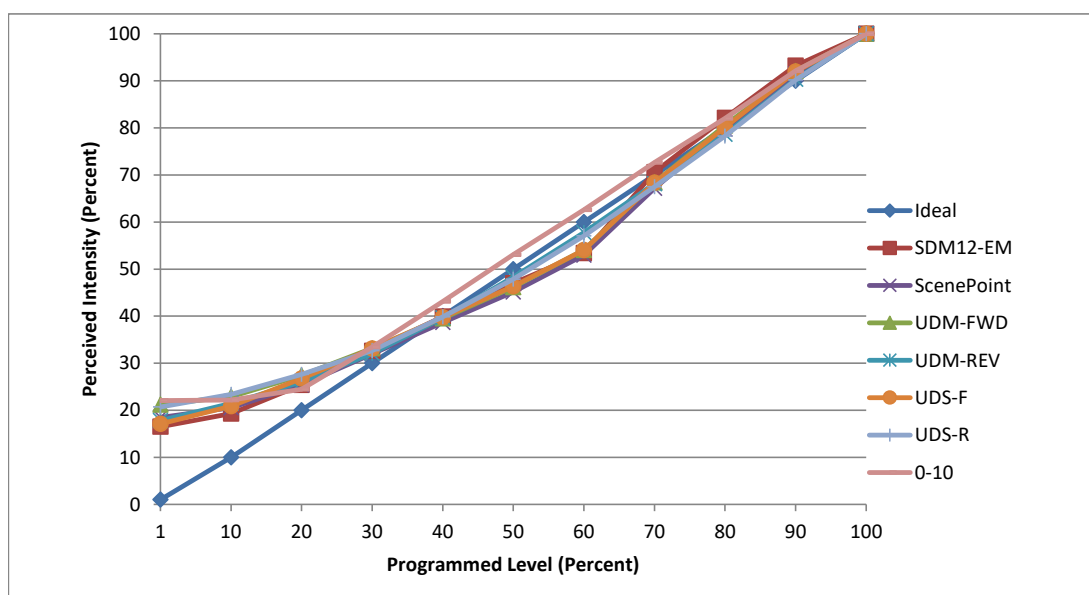


**Manufacturer** No8  
**Model** 200-HD-IC  
**Description** 2" LED downlights  
**Driver** DIM1-2-HD-IC (one per fixture)  
**Nominal Power (W)** 18  
**Dimming Control** Forward, Reverse, and 0-10  
**Product Range** 200-HD-IC series  
**Test Date** 12 January, 2023

Dimmer Tested Against:	SDM12-EM	ScenePoint	UDM-FWD	UDM-REV	UDS-F	UDS-R	0-10
Commercial Pass/Fail	Pass	Pass	Pass	Pass	Pass	Pass	Pass
Residential Pass/Fail	Pass	Pass	Pass	Pass	Pass	Pass	Pass
Best-Fit Power Profile:							
Minimum ON	3.3	6	5.5	17	6	16.5	0.75
Maximum ON	71.75	77.5	75.4	80.2	78.5	77.5	6.65
Adjust	100	100	100	50	85	70	100
Light Output Range (vs. non-dimmed)							
Maximum (Perceived), 120V	95.1%	95.1%	94.9%	94.9%	95.0%	95.2%	94.9%
Minimum (Perceived)	15.7%	17.6%	20.1%	16.9%	16.3%	19.7%	20.9%
Minimum (Measured)	2.5%	3.1%	4.0%	2.9%	2.6%	3.9%	4.4%

Linearity Curves (Best-fit Power Profile Applied):



jwm

**Observations:** Test performed in four unit configuration.